

FOR MINING APPLICATIONS.

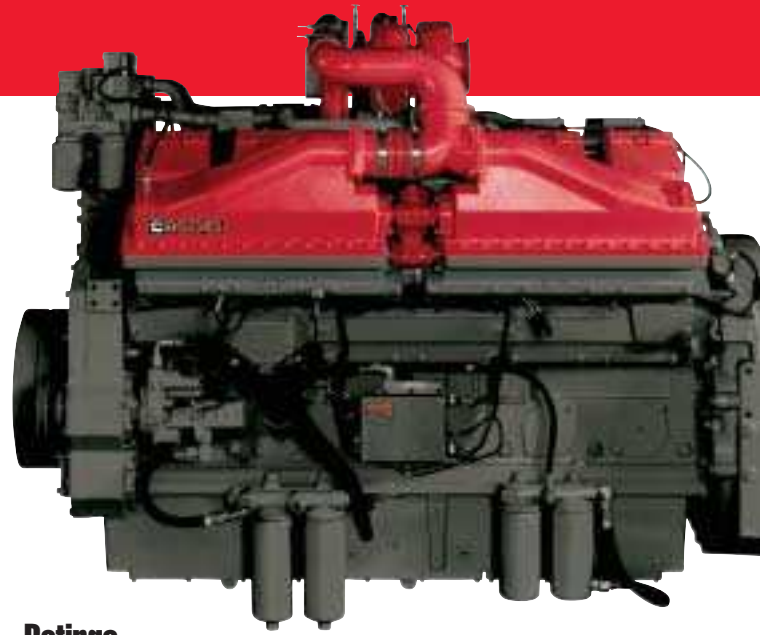
QSK45/60

Cummins QSK45 and QSK60 are designed to drive costs down and availability up. Heavy-duty components and advanced electronics deliver durable performance you can see using CENSE™ electronic engine management during operation – with results that can be communicated to you via MiningGateway.com and monitored for you by QuickServe ProAct™. The Prelub system eliminates wear from hot and cold starts. Plus, extended service options like Cummins ELIMINATOR™ and CENTINEL™ keep you running up to 1,500 hours between filter changes – and 4,000 hours between oil changes.

Whether you choose the QSK45 with its V12 configuration or the V16 QSK60, you'll have all the power you need for large excavators, loaders and 300-ton and larger haul trucks. Whether you're buying new or repowering, the QSK45 and QSK60 can help minimize downtime and maximize productivity.

Meeting Global Emissions Standards.

The QSK45 and QSK60 are Tier 1 compliant and the same base technology will be used to meet Tier 2 emissions standards with minimal installation impact. Cummins is dedicated to reducing the environmental impact of its engines, through increased combustion efficiency with reduced emissions, longer service intervals with less oil and oil filter disposal, and decreased noise.



Ratings

ENGINE MODEL	ADVERTISED HP (kW) @ RPM	PEAK TORQUE LB-FT (N•M) @ RPM
QSK60		
QSK60-2700*	2700 (2014) @ 1900	7840 (10630) @ 1500
QSK60-2500	2500 (1865) @ 1900	7260 (9843) @ 1500
QSK60-2500	2500 (1865) @ 1900	7257 (9839) @ 1500
QSK60-2300	2300 (1716) @ 1900	6677 (9053) @ 1500
QSK60-2200	2200 (1641) @ 1800	7175 (9728) @ 1500
QSK60-2000	2000 (1492) @ 1900	6169 (8364) @ 1500
QSK60-2000	2000 (1492) @ 1800	6169 (8364) @ 1500
QSK60-1800	1800 (1343) @ 1900	6274 (8506) @ 1500
QSK45		
QSK45-2250*	2250 (1679) @ 1900	6300 (8542) @ 1500
QSK45-2000	2000 (1492) @ 1900	5805 (7871) @ 1500
QSK45-1600	1600 (1194) @ 1900	5042 (6836) @ 1500
QSK45-1500	1500 (1119) @ 1900	5041 (6835) @ 1300
QSK45-1500	1500 (1119) @ 1800	4727 (6409) @ 1500
QSK45-1487	1487 (1109) @ 1900	5042 (6836) @ 1500
QSK45-1350	1350 (1007) @ 1800	4525 (6135) @ 1300
QSK45-1200	1200 (895) @ 1900	4425 (5999) @ 1300

*Indicates a continuous/water management rating.

All ratings are intermittent unless otherwise noted.

Additional ratings may be available. Check with your Cummins distributor or dealer.

Specifications

	QSK45	QSK60
ENGINE TYPE	VEE, 12-CYLINDER	VEE, 16-CYLINDER
ADVERTISED HORSEPOWER	1200-2250 HP 895-1679 kW	1800-2700 HP 1343-2014 kW
PEAK TORQUE	4425-6300 LB-FT 5999-8542 N•M	6274-7840 LB-FT 8506-10630 N•M
BORE AND STROKE	6.26 IN X 7.48 IN 159 MM X 190 MM	6.26 IN X 7.48 IN 159 MM X 190 MM
NUMBER OF CYLINDERS	12	16
OIL SYSTEM CAPACITY	192 U.S. QT 182 LITERS	297 U.S. QT 281 LITERS
COOLANT CAPACITY*	116.2 U.S. QT 110 LITERS	147.9/179.6 U.S. QT** 140/170 LITERS
LENGTH	93.4 IN 2372 MM	114.8 IN 2916 MM
WIDTH	61.9 IN 1572 MM	62.3 IN 1582 MM
HEIGHT	74 IN 1880 MM	79 IN 2006 MM
WET WEIGHT	13,500 LB 6,123 KG	17,539/20,514 LB** 7,956/9,305 KG

*Engine only.

**Single-stage/two-stage.